

Dillon ki Manzil.....

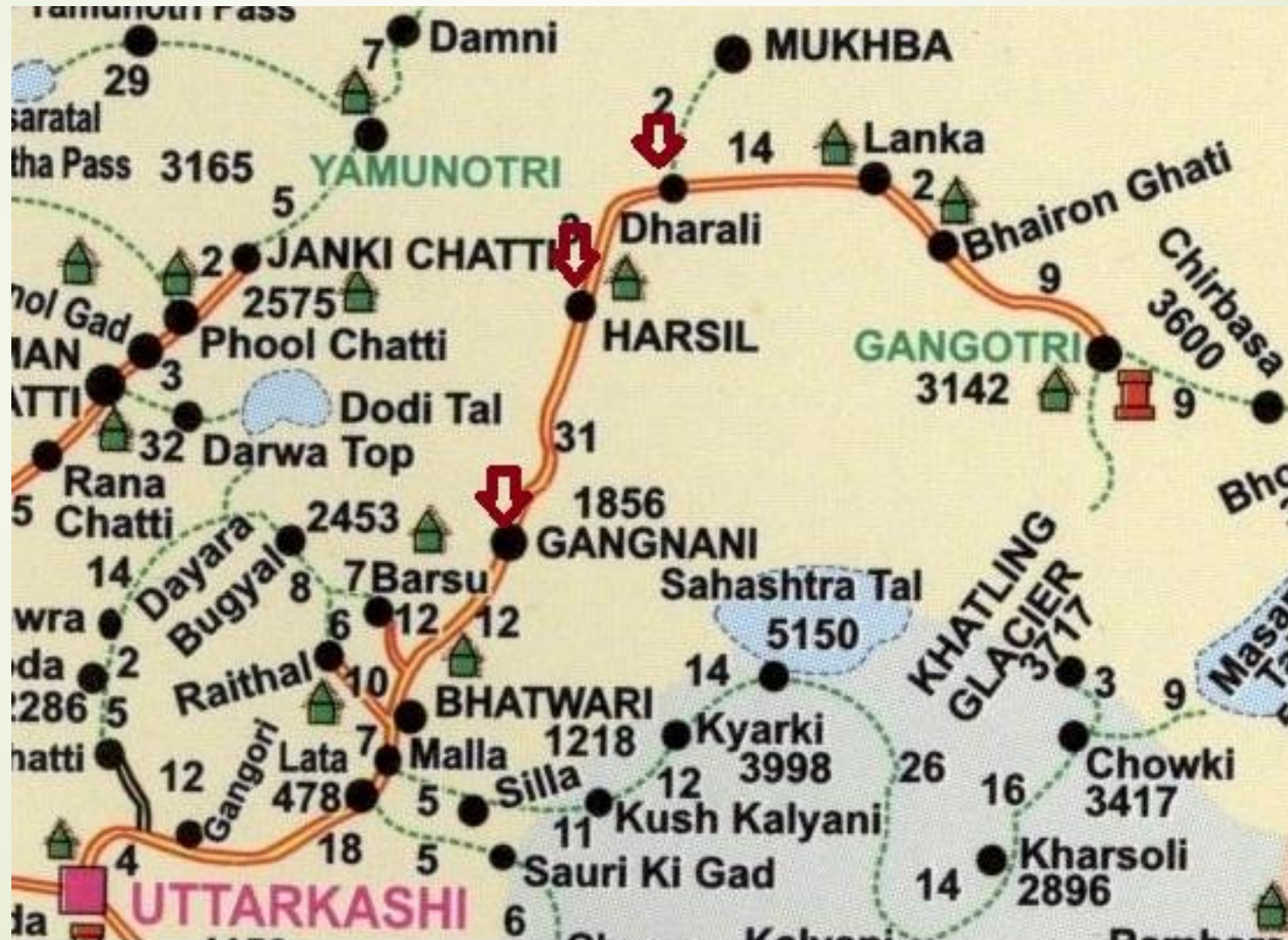
Harsil !

Group 4

The Group



The Journey



Day 1

Mussoorie to Uttarkashi

- Situated on the banks of river Bhagirathi
- Altitude 1158m above MSL
- Holy town- Vishwanath Temple, Trishul
- The confluence of rivers Varuna and Asi
- Maneri Dam
- Halt at Uttarkashi along with Group 1

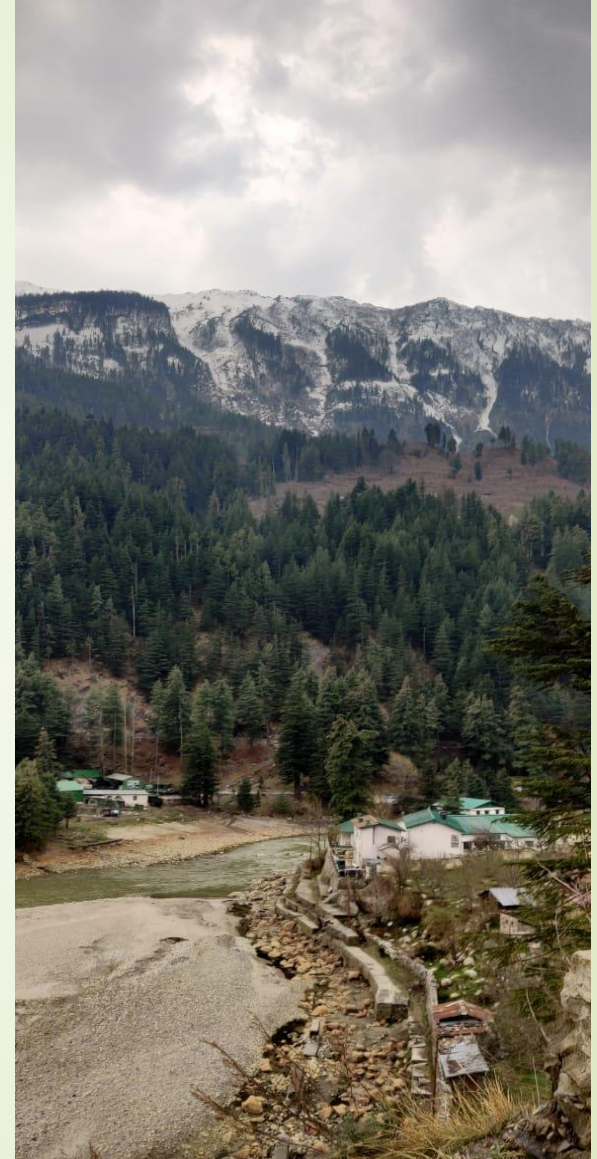


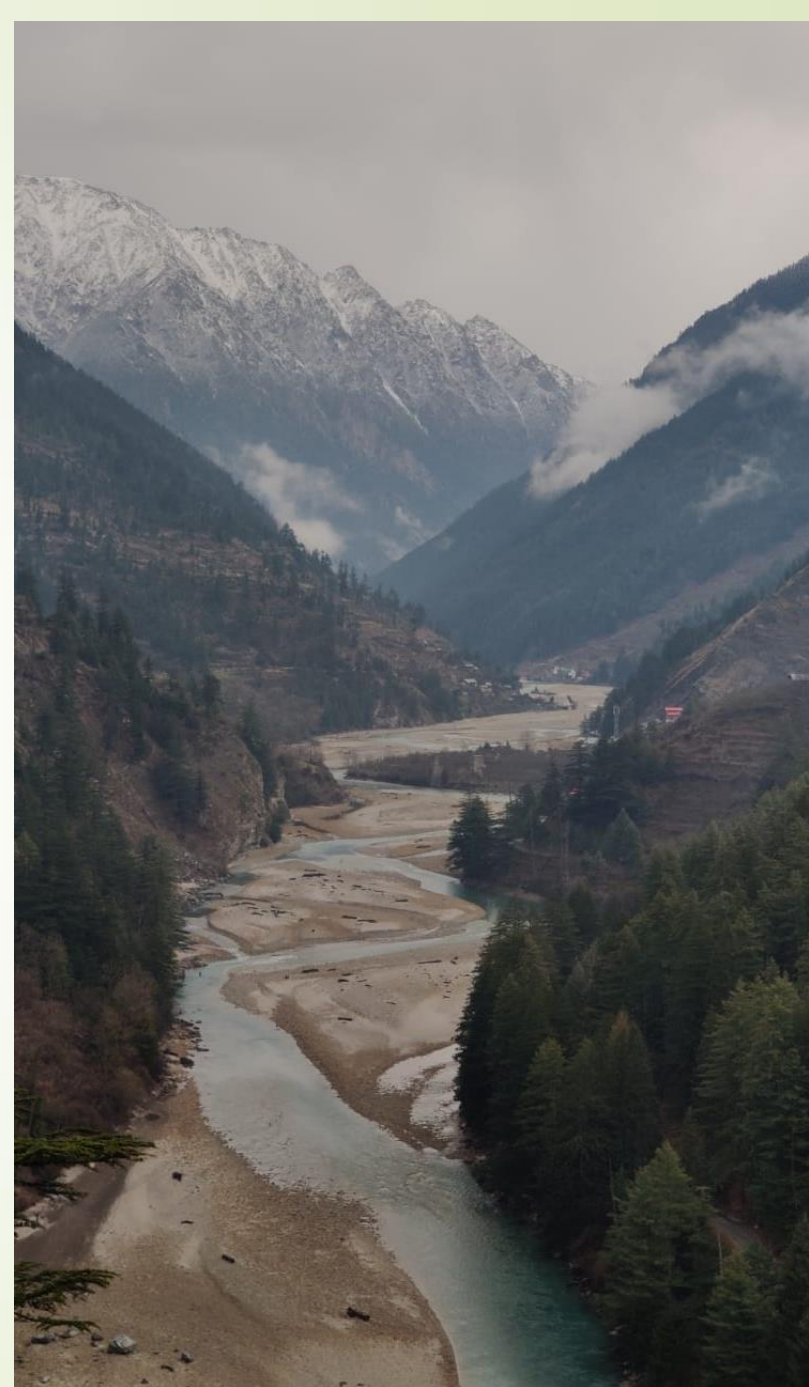
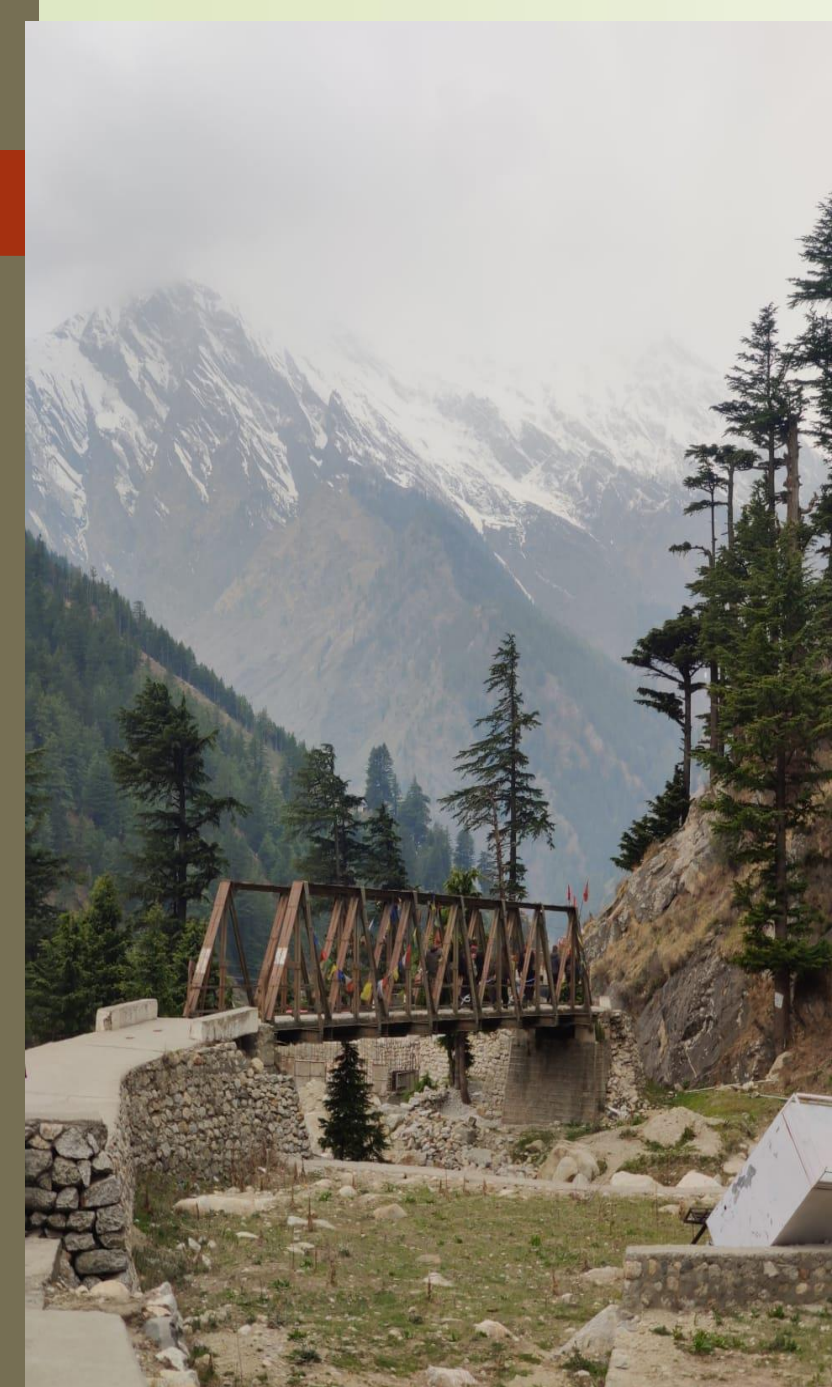


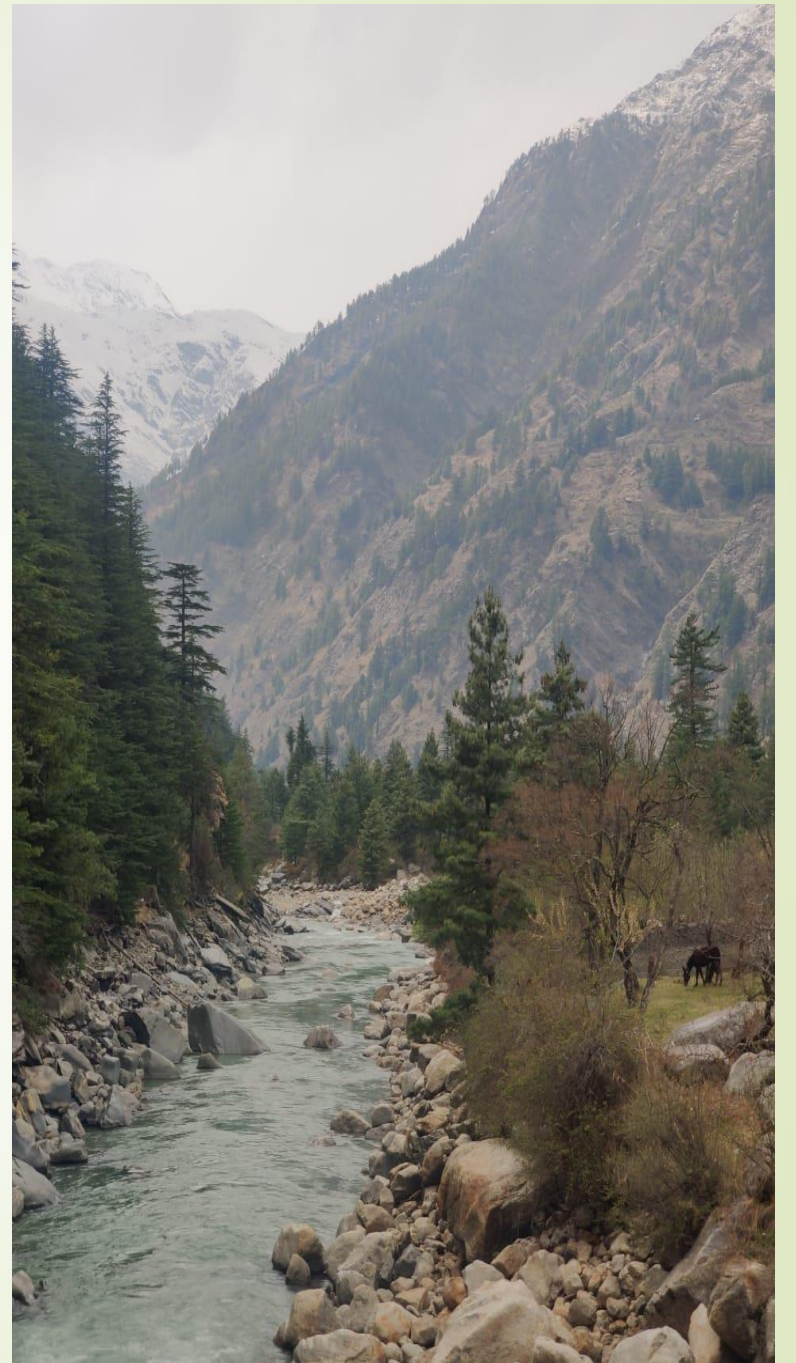
Day 2

Harsil

- ▶ Valley on the banks of Bhagirathi river
- ▶ GMVN Guest House
- ▶ Security- close to China border, ITBP Bihar battalion
- ▶ Tourist destination
- ▶ Apple plantations started by British
- ▶ Deodar forests
- ▶ Starting point for many long treks – Kyarkoti danda , Chitkul

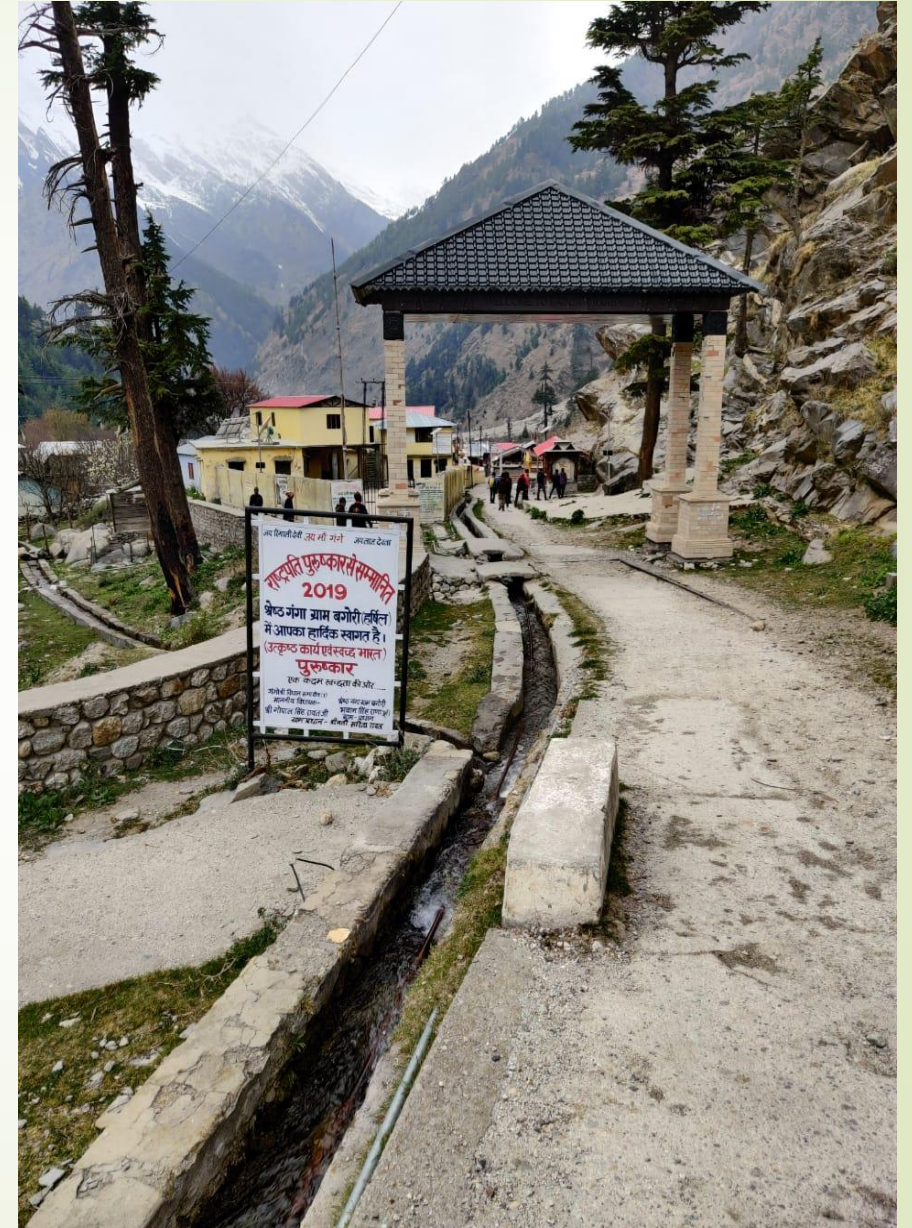


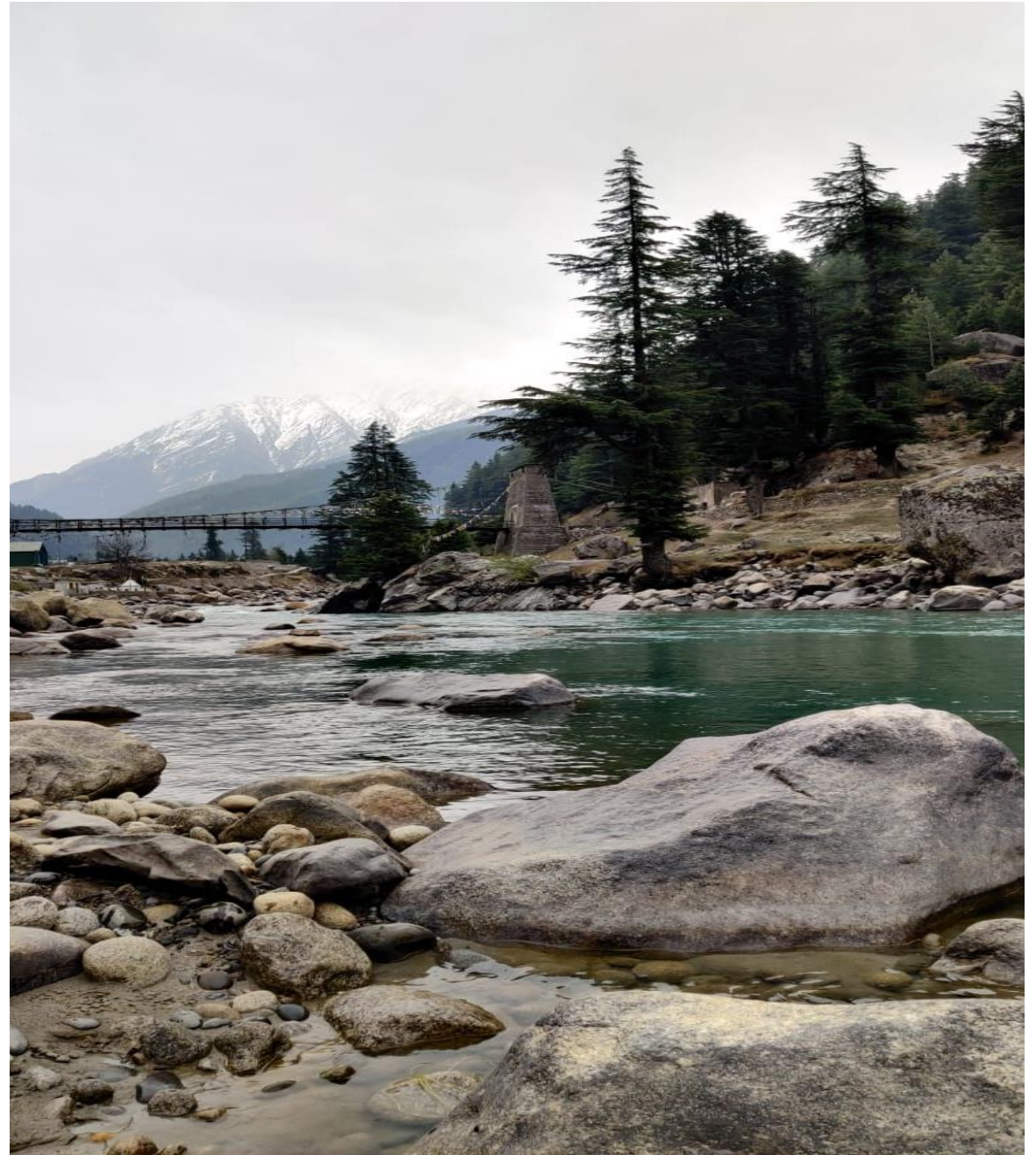




Trek to Bagori Village

- Tribal village – (Bhotia)
- Located between Jalandhari and Bhagirathi rivers
- Sheep rearing and apple orchards
- Knit cloths – Dumkar shawls, Pankhi, other woollens from sheep's wool by hathkargha
- Temples- Lal Devta, Chain, Buddha, Ringali, Shiv
- First ganga village under Namami Gange (Dec, 2017)
- Transhumance





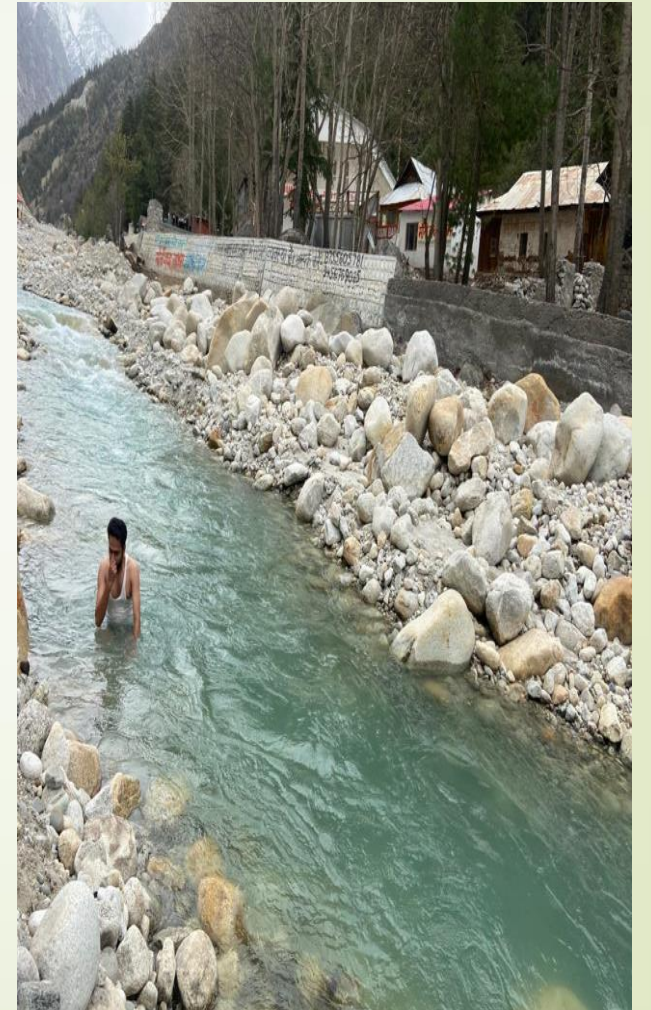
Day 3

Gangotri

- Origin of Ganges
- 3100 m above MSL
- Goddess Ganga descended from the locks of lord Shiva's hair
- Seat of Goddess Ganga
- One of the four sites in Chhota Chardham pilgrimage circuit
- Gangotri temple built by Nepalese general Amar Singh Thapa
- Gomukh in Gangotri glacier is 19km trek from Gangotri
- Temple is closed from Diwali to Akshay Tithiya



“Ram Teri Ganga Maili !”



Day 4 trek to Kyarkoti

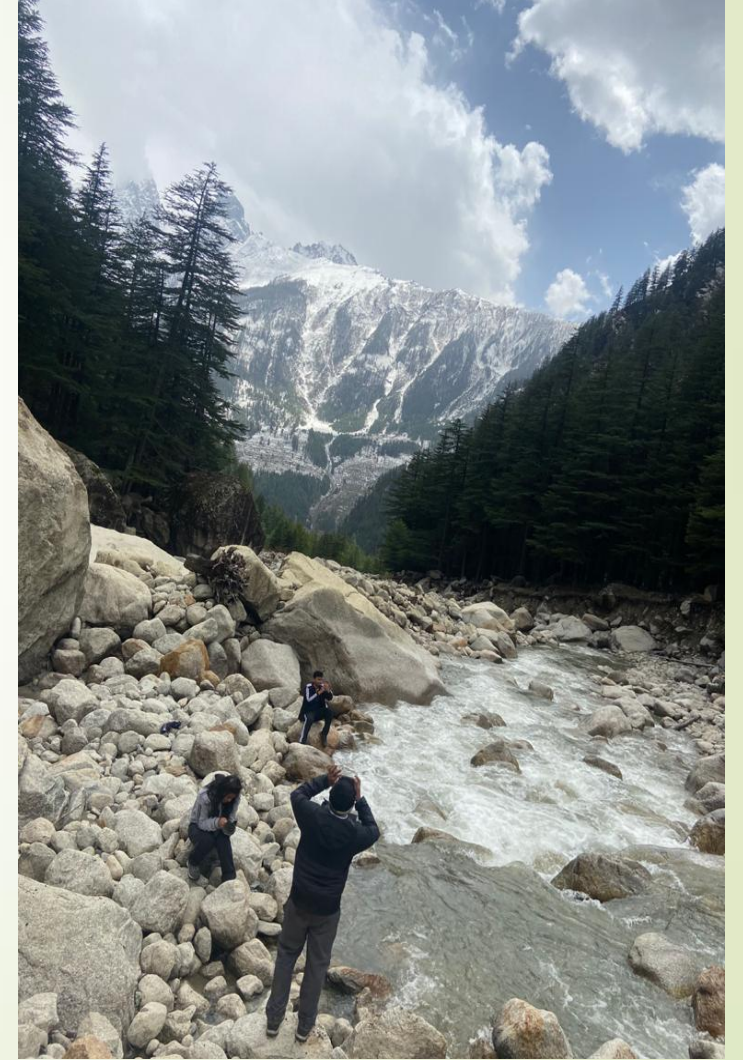
- Unexpected snowfall in Harsil
- Change of plans
- Test of stamina and endurance



Yeh Haseen Vadiyan Ye Khulla Asmaan !



Kyarkoti se Pyarkoti . . . !



Sunny Day mein Sunny Deol !



Day 5

Chholmi village

- Apple orchards
- Natural cold storage
- Sustainable tourism
- Local beliefs and traditions
- Glacier







Day 6

Sat Tal, Dharali, Mukhwa, Murkhonda

- Trek to Sat Tal
- 7 lakes, 2 at present
- One being restored by Forest Dept
- Geography- filled with sediments
- Naga place of worship



Mukhawa



- Land of Rishi Mathang
- Idols from Gangotri temple kept here during winter
- 2 temples- Mukhawa and Murkhonda
- Ritual duties observed by Semwal pujaris hailing from Mukhawa



Murkhonda

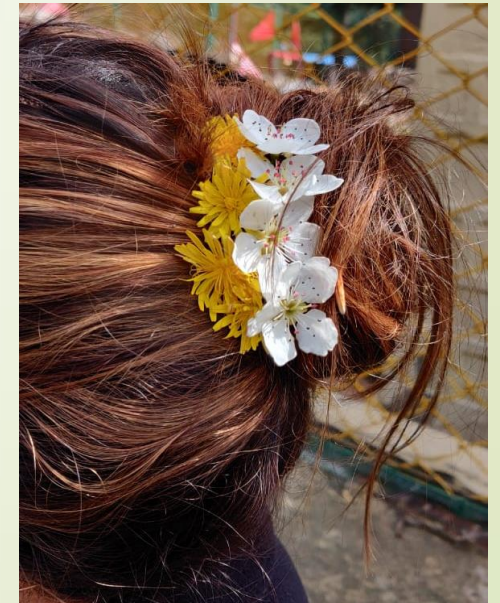


Sat Taal



Flora n Fauna

- ▶ Fauna: Birds, Bharal, Bear
- ▶ Flora: Apple, Pear
- ▶ Pinus Wallichiana, Deodar, Bhoj Patra
- ▶ Wild flowers



Bharal

- Himalayan Blue Sheep
- However, more related to goats
- Favored prey of snow leopards
- Camouflaging skills





Male Grey Wagtail



Blue Whistling Thrush

Birds

clicks by Rishibha Singh Netam



Male White Throated Redstart



Male Little Pied Flycatcher



Male White Wagtail (Masked)



Female Rock Bunting



Male Plumbeous Water Redstart



Plain Mountain Finch



FLORA



#Vocal for Local



Kabutar Jaa Jaa Jaa !



Local beliefs and traditions



Food

- Momos
- Chaunsa
- Mandua Ki Roti
- Garhwal Ka Fannah
- Maggi
- Local varieties of rice
- Burransh





Group dynamics

- Divided by services united by trek.
- Varying paces, yet moving together.
- Birthday celebrations.
- Bonfire.
- Group together taking care of those who are unwell.







Thank You!

